

2019-20 Budget Profile



USD 303 Ness City



School Finance
Kansas State Department of Education
Landon State Office Building
900 SW Jackson Street, Suite 356
Topeka, Kansas 66612-1212

www.ksde.org

Order of Contents

- Budget General Information (characteristics of district)
- Supplemental Information for Tables in *Summary of Expenditures*
- KSDE Website Information Available
- Summary of Expenditures (Sumexpen.xlsx)

2019-20 Budget General Information
USD #: 303

Introduction

Unified School District #303 serves students and families in a 517.8 square mile area of Western Kansas in Ness County. The District has two attendance centers. Grades K-6 attend Ness City Elementary School located at 500 East Chestnut and grades 7-12 attend Ness City Junior/Senior High School located at 200 North 5th in Ness City.

Board Members

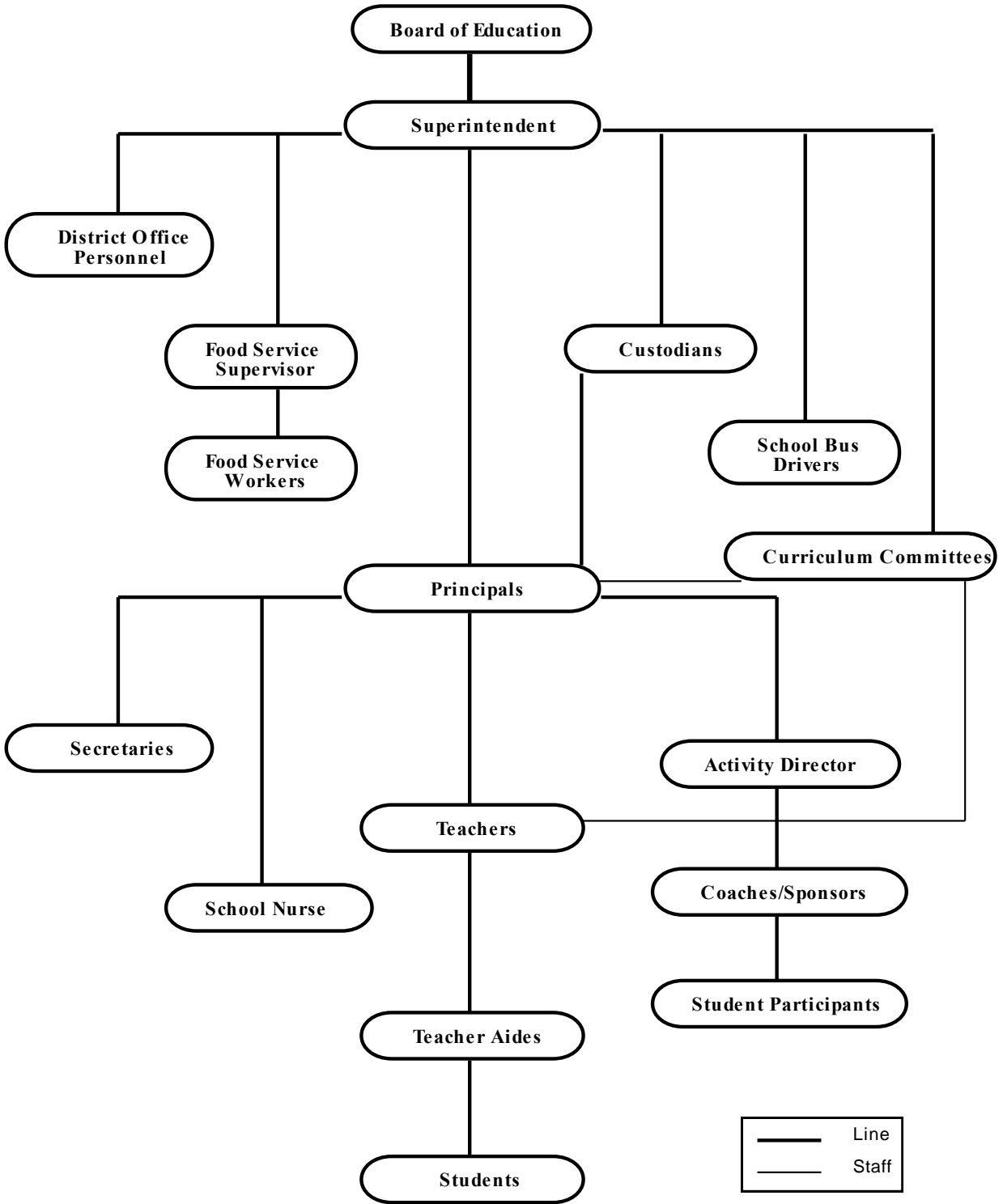
Clyde McCracken, President	----- 222 N Kansas	----- Ness City, KS 67560
Greg Flax	----- 207 S Penn	----- Ness City, KS 67560
Tom Frusher	----- 114 E Cedar St	----- Ness City, KS 67560
Russell King	----- 105 S Depot	----- Ness City, KS 67560
Jason Ratliff	----- PO Box 322	----- Ness City, KS 67560
Andy Fellhoeter	----- 720 Crescent Drive	----- Ness City, KS 67560
Laurie Petersilie	----- 16420 40 Rd	----- Ness City, KS 67560

Key Staff

Superintendent: Derek Reinhardt
Business Office Staff: Susie Schlegel, Board Clerk
Kim Borger, Board Treasurer
Other Key Contacts: Tom Flax, JR/SR High Principal

Curriculum & Instruction Staff:

Megan Albers – 5 th Grade	Catherine McIntosh – Art
Bill Allen – Math	Candice McNinch– Kindergarten
Megan Balman – 5 th Grade	Amber Pfannenstiel – 1 st Grade
Lyn Bernbeck – Language Arts/Social Studies	Brandt Rogers – 7-8 th Grade/At-Risk
Carrie Beutler – At-Risk Behavior/Librarian	Jarett Schulte - 6 th Grade
Amanda Buethe – Language Arts/FCS	Lesa Schulte – Preschool
Bruce Buethe -Math	Mark Hager– Vo Ag
Matthew Clay - Science	Linda Tillitson – 3 rd Grade
Marc Cowles - Weights/HS MTSS Math	Elaine Wierman – Band/Vocal
Katren Cramer – 4 th Grade	Patrick Younger – Physical Education
Taylor Dreiling - Science	
Tonya Fenley – Counselor	
Dawn Flax – Social Science/ESOL	
Cindy Gillespie – Computer/Business	
Shelby Heim – 2 nd Grade	
Emily Keener – ES Title Math/Reading	
Brent Kerr – Industrial Art	



Approved: February 17, 2005

The District's Accomplishments and Challenges

Accomplishments:

The mission of USD 303 is to enable all students to reach their maximum levels of achievement to become responsible, productive citizens. We strive to achieve this mission in all aspects of the students' lives by offering low pupil/teacher ratios, MTSS services K-12, on-going alignment of curriculum, strong professional development opportunities for all staff, strong extra-curricular opportunities, and a staff that maintains an exceptional desire to improve daily.

USD 303 has made a conscious effort to prepare our students for the 21st Century World. We have implemented a one-to-one program with Chromebooks for all students K-12, incorporated Promethean Boards in the majority of our classrooms, and have worked to constantly improve our technology infrastructure, and currently offer a full Gig of Internet connectivity through the District.

We have worked to focus the Professional Development opportunities for our teachers and staff. Instead of trying to do everything, we have narrowed our vision of professional development to moving our educational system to a student centered, project based, creativity and innovation, growth mindset. We have spent most of our PD days working on training teachers on proper implementation of Project Based Learning, and are excited to see benefits coming from this investment. Students are learning by doing and applying their knowledge. We are also proud to say we have had the opportunity to visit other parts of the Country to see how education is changing. These opportunities have helped us to develop relationships with other outstanding educators around the Globe. These relationships have helped us to further improve our Professional Learning Networks, instruction, curriculum, and opportunities for our students.

This past year we were awarded a Striving Readers (LiNK) Grant as part of a consortium of several other Southwest Kansas schools. This grant has helped us to beginning improving literacy and ELA instruction and curriculum alignment. We are excited to see the gains this process will produce in our ELA scores and achievements.

We have worked hard to incorporate district wide many of the strategies that we put in place at the elementary level. This process has given us a leg up in the new KESA process. By working through the 5Rs rubrics, we have begun to outline our areas of strength and weakness, and develop plans to leverage those strengths to improve our weaknesses. We are currently entering year 5 of KESA cycle, and have learned a lot about our District and students. This process has allowed us to create better goals and implement strategies to reach those goals.

One of our biggest goals in the area of improvement deals with developing a better understanding of the social emotional and character develop of our students. We believe that if we do not address the mental and emotional states of our students we cannot help them achieve at their highest level. By providing professional development and developing a better understanding of the SECD standards, we will better be able to develop strong, positive relationships with our students.

We have worked hard to become more efficient with the tax payer's dollar. We have implemented efficiencies in our utility areas. We have reduced costs and expenses in our Food Service, Custodial/Maintenance Departments, and Transportation Departments. We have also implemented multiple digital systems to help reduce costs in paper usage and personnel.

We are proud of our high graduation rate that continues to stay between 95 and 100%. We are also proud of the work we have done to grow CTE opportunities and promote post-secondary attainment. One big focus for our District has been to educate students and parents about the different opportunities available in the post-secondary arena. It does not have to a traditional 4-year college, and many of our students that would have simply stayed in the area and worked have begun attending and obtaining degrees/certifications from Community Colleges and Technical Schools.

Challenges:

Like most Western Kansas school districts, we face declining enrollment, rising costs, budget restrictions, and even though we have been very lucky to date, retention and recruitment of quality staff members.

As we look to the future, we face the challenge of dealing with aging buildings, and the tax implications of a bond issue. Property evaluation and assessment has emerged as a major challenge the last couple of years. A 37% drop in Assessed Value in 15/16, an additional drop of 6% for the 16/17 school year, and another 2.5% for the 17/18 school year is making it difficult to maintain a budget without raising taxes. While we saw a small increase in assessed valuation in the 18/19 school year, we lost that increase as we enter the 19/20 school year, once again making it difficult to budget without a MILL Levy increase.

These budget concerns combined with declining enrollment have led the District to cut three teaching positions which has resulted in loss of opportunities for our students and loss of academic support for our struggling students in the elementary. This leads into a fear for the retention and recruitment of quality staff will become a major challenge over the next couple of years. As we get finances back under control and are able to replace positions that have been cut, we fear that we will not be able to find any staff let alone quality staff. In spite of these challenges, the Ness City community and USD 303 continue to work hard, prosper, grow, and exceed in many areas.

Academically, we continue to struggle with test scores. The work we are doing through the Striving Readers (LiNK) grant will help us to improve in this area across all content areas. We are also working to improve ACT scores in different ways. This is a challenge because we will not see drastic improvement overnight, but will have to stay vigilante in this process so we see improvement over time.

Supplemental Information for the Following Tables

1. Summary of Total Expenditures by Function (All Funds)
2. Summary of General Fund Expenditures by Function
3. Summary of Supplemental General Fund Expenditures by Function
4. Summary of General and Supplemental General Fund Expenditures by Function
5. Summary of Special Education Fund by Function
6. Instruction Expenditures (1000)
7. Student Support Expenditures (2100)
8. Instructional Support Expenditures (2200)
9. General Administration Expenditures (2300)
10. School Administration Expenditures (2400)
11. Central Services Expenditures (2500)
12. Operations and Maintenance Expenditures (2600)
13. Transportation Expenditures (2700)
14. Other Support Services Expenditures (2900)
15. Food Service Expenditures (3100)
16. Community Services Operations (3300)
17. Capital Improvements (4000)
18. Debt Services (5100)
19. Miscellaneous Information – Transfers (5200)
20. Miscellaneous Information Unencumbered Cash Balance by Fund
21. Reserve Funds Unencumbered Cash Balance
22. Other Information – Enrollment Information
23. Miscellaneous Information Mill Rates by Fund
24. Other Information – Assessed Valuation and Bonded Indebtedness

Note: FTE is the audited enrollment 9/20 and 2/20 (if applicable) and estimated for the budget year, which includes 4yr old at-risk and virtual enrollment. Enrollment does not include non-funded preschool. Beginning 2017-18, full-day Kindergarten is 1.0 FTE. This information is used for calculating Amount Per Pupil for Sumexpen.xlsx and Budget At A Glance (BAG).

KSDE Website Information Available

K-12 Statistics (Building, District or State Totals) website below:

<http://svapp15586.ksde.org/k12/k12.aspx>

- Attendance / Enrollment Reports
- Staff Reports
- Graduates / Dropouts Reports
- Crime / Violence Reports

School Finance Reports and Publications website below:

<http://www.ksde.org/Agency/Fiscal-and-Administrative-Services/School-Finance/Reports-and-Publications>

- Assessed Valuation
- Cash Balances
- Headcount Enrollment
- Mill Levies
- Personnel (Certified/Non-Certified)
- Salary Reports

Kansas Building Report Card website below:

<http://ksreportcard.ksde.org/>

- Attendance Rate
- Graduation Rate
- Dropout Rate
- School Violence
- Assessments
 - Reading
 - Mathematics
 - Writing
- Graduates Passing Adv. Science Courses
- Graduates Passing Adv. Math Courses